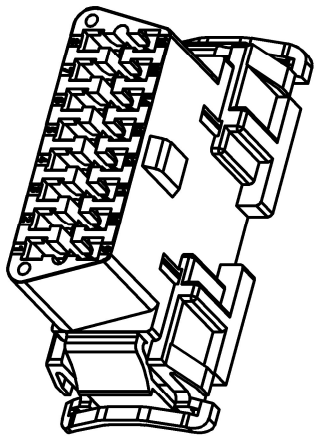
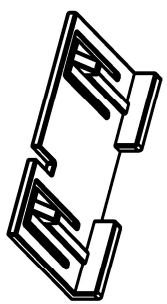
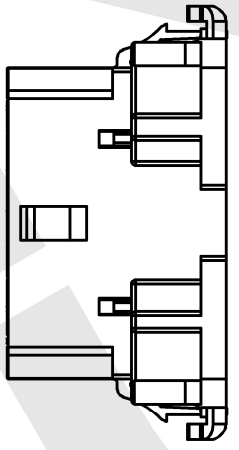
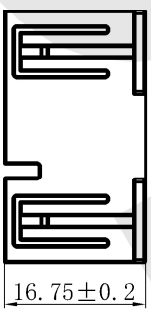
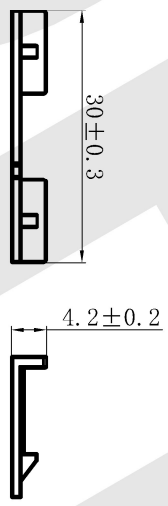
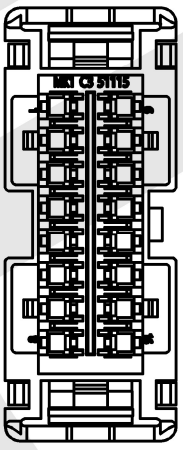
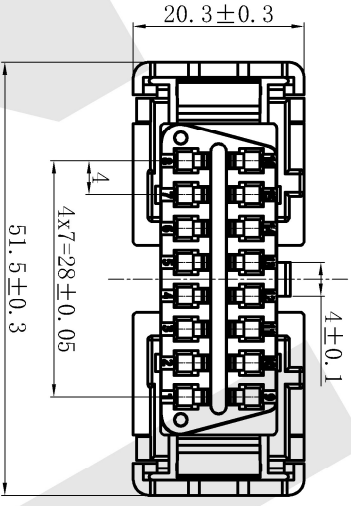
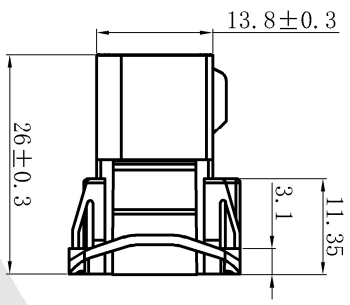
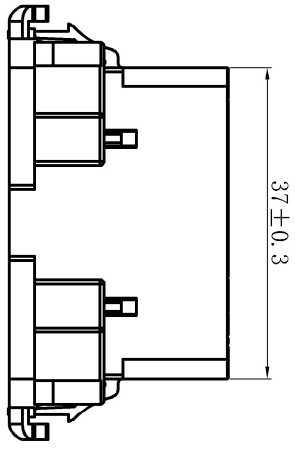


8 7 6 5 4 3 2 1



国内编号: DJ7167-1.8-21

乐清市地宏接插件有限公司

系列: 塑壳系列

设计: 王敏敏

审核: 黄银丹

未注公差尺寸按 GB/T 1804-2016		系列: 塑壳系列	
F	偏差值	设计: 王敏敏	审核: 黄银丹
>0.5~6	±0.05	材料	重量/克
>6~30	±0.1	视图	比例
>30~120	±0.15	比例	品名
>120~400	±0.2	比例	OBDI1诊断插头

- 技术要求:
1. 产品表面无缩水、披锋、油污、缺胶、杂色等不良现象;
 2. 产品符合ROHS环保标准。

A

B

C

D

E

F

8 7 6 5 4 3 2 1