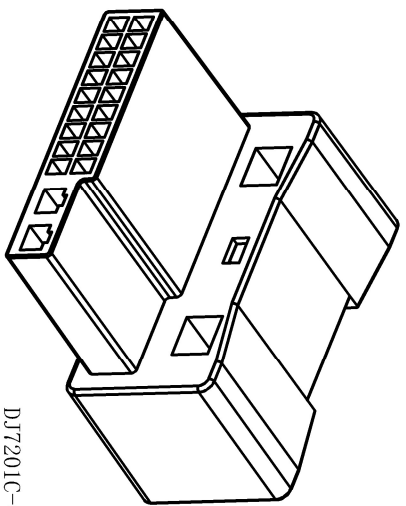
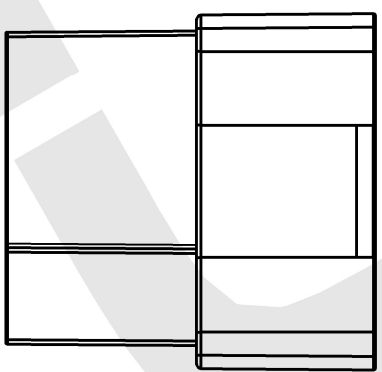
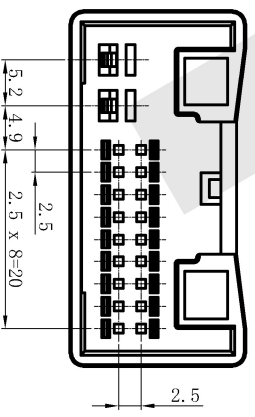
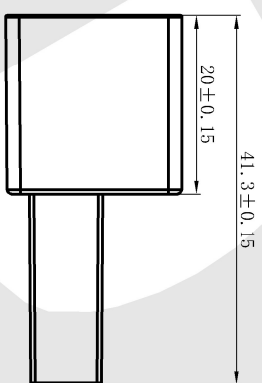
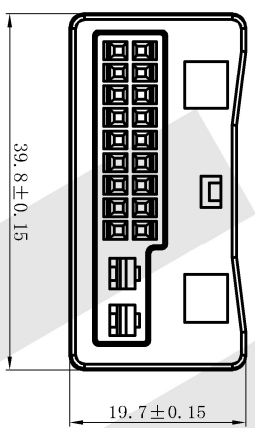
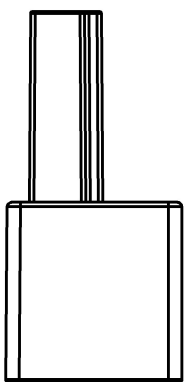
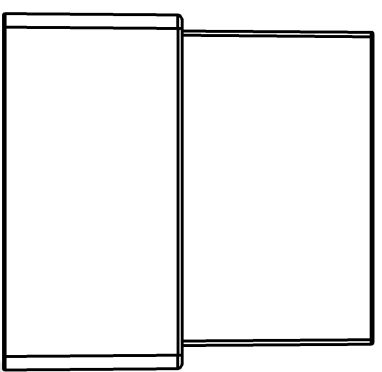


8 7 6 5 4 3 2 1



- 技术要求:
1. 产品表面无缩水、披峰、油污、缺胶、杂色等不良现象;
 2. 产品符合RoHS标准。

未注公差尺寸按 GB/T 1804-2016

F	偏差值
>0.5~6	±0.05
>6~30	±0.1
>30~120	±0.15
>120~400	±0.2

乐清市地宏接插件有限公司		设计	审核	材料	重量/克	视图	比例
乐清市地宏接插件有限公司		王敏	黄银丹				

系列:	塑料系列
编号:	4M0971975-11
品名:	宝马20P横板母壳

DJ7201C-0.6-2.8-11

F E D C B A

8 7 6 5 4 3 2 1

F E D C B A